

# Wheatbelt Inc.

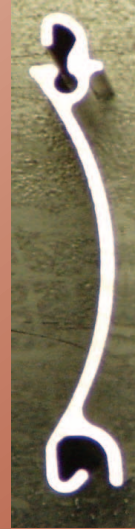
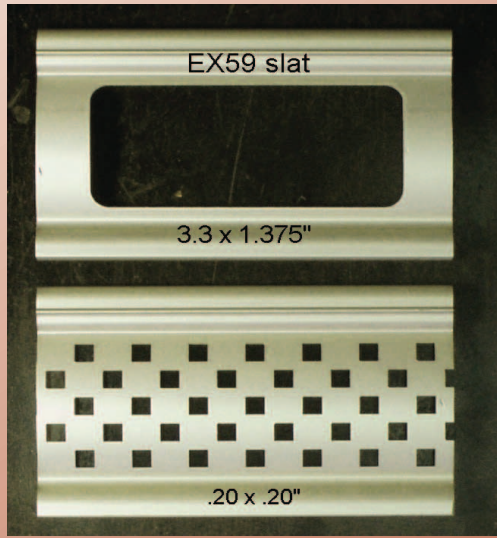
**Rolling Shutters For Windows, Doors, Serving Windows**

300 Industrial Road • Hillsboro, Kansas 67063 • 800-264-5171 • 620-947-2323 • Fax: 620-947-3053 • roger@rollupshutter.com • www.rollupshutter.com

## TWO NEW ROLLING SHUTTER SLATS FROM WHEATBELT, INC.

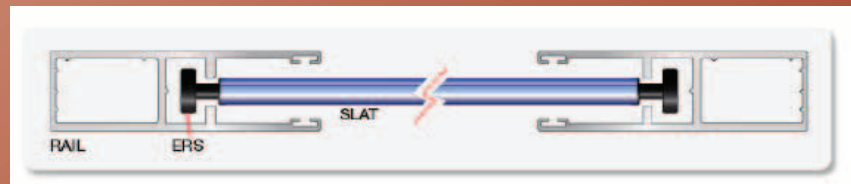
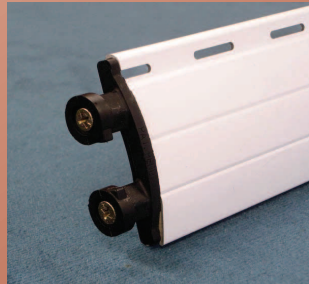
### PUNCHED SLAT

Colors available are White, Attica Beige, Dark Bronze, and Clear Anodized.



punched  
end locks  
Side Rail 1.4 LBS per sq. ft.  
2.3125" wide

### APEX 55 WITH WIND LOCKS



3" wide guide rails

Slat wt. 2.2 LBS per sq. ft.

The Apex55 slat has a .023" skin with a very hard foam core to hold the end locks. It looks like our RF55 slat and uses the same size hood.

Colors available are White, Dark Bronze, and Attica Beige,

### Optional Heavy Duty Base Slat With Removable Cylinder Lock

Fits RF55, EX55, Apex 55 and EX59 punched slat.

