

Wheatbelt Inc.

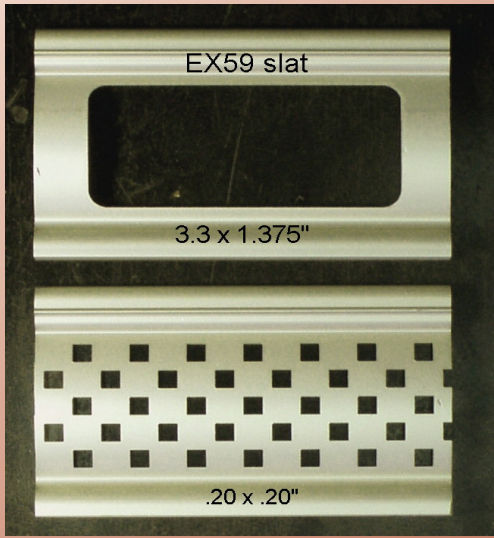
Rolling Shutters For Windows, Doors, Serving Windows

300 Industrial Road • Hillsboro, Kansas 67063 • 800-264-5171 • 620-947-2323 • Fax: 620-947-3053 • roger@rollupshutter.com • www.rollupshutter.com

TWO NEW ROLLING SHUTTER SLATS FROM WHEATBELT, INC.

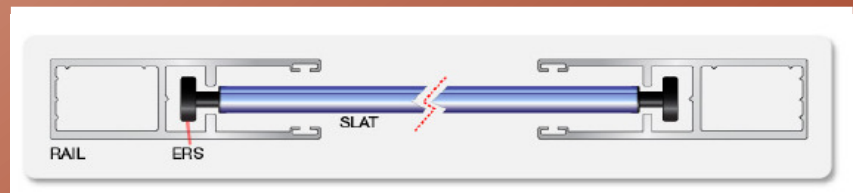
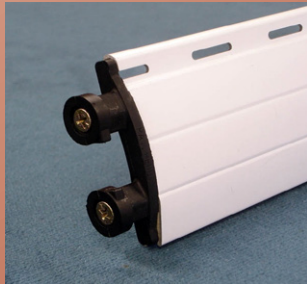
PUNCHED SLAT

Colors available are White, Attica Beige, Dark Bronze, and Clear Anodized.



punched
end locks 1.4 LBS per sq. ft.
Side Rail 2.3125" wide

RF55 HARD FOAM SLAT WITH WIND LOCKS



3" wide guide rails

Slat wt. 2.2 LBS per sq. ft.

The RF55-H slat has a .019" skin with a very hard foam core to hold the end locks.

It looks like our RF55 slat and uses the same size hood.

Colors available are White, Dark Bronze, and Attica Beige,

Optional Heavy Duty Base Slat With Removable Cylinder Lock and handle

Fits RF55, EX60, RF55-H and EX59 punched slat.

